

STEHLE

INDUSTRIAL PRODUCTS

Hot Melt Systems Product Catalog

19701 Bethel Church Rd
Ste 103-165
Cornelius, NC 28031

Sales@StehleIndustrial.com
StehleIndustrial.com

Phone: 704-439-7491
Hot-Line: 855-933-4596

STEHLE

Stehle Industrial Products is an independently owned company staffed and supported by people who have spent decades in the packaging and converting industry. Our vast experience allows us to offer solutions other may not know. All our products are manufactured in the USA because we believe it is important to support our American workers.

We offer a full line of adhesives and hot melt replacement parts to help you reduce your packaging cost. Our hot melt equipment repair and refurbished equipment sales will extend the life of your equipment and help reduce your equipment costs. Let us show you how we can become your most trusted supplier for parts and adhesives.

High Quality, Low Price, Fast Delivery.

Telephone: 704-439-7491
Email: Sales@StehleIndustrial.com
Website: StehleIndustrial.com
Address: 19701 Bethel Church Rd, Ste 103-165
Cornelius, NC 28031

Hot-Line: 855-933-4596

Sections

03 Nozzles

Standard, Swivel, Spray, Air-Open-Air-Closed, Custom Configuration. ALL NEW AD31-COMPATIBLE HAND GUN

1

10 Glue Filters

90 Deg, 45 Deg, Inline and Quick Change Filters

2

13 Hoses

Hot Melt Hoses

3

14 Glue Modules

Standard, Air-Open-Air-Closed, POD-Modules, Fine Adjust and Mini Modules

4

20 Glue Guns

Standard, Swivel, Spray, Air-Open-Air-Closed, Custom Configuration. ALL NEW AD31-COMPATIBLE HAND GUN

5

26 Rebuilt Equipment

Repair and refurbish Nordson®, ITW Dynatech®, Valco Melton® and hot melt pumps. Refurbished melter sales.

6

27 Hot Melt

Metallocene, EVA, Cool Technology, Freezer Grade, Fugitive, and Palletizing

7

28 Glue Guns and Sticks

Hand-held guns and hot melt sticks.

8

29 Accessories

RTDs, Heaters, and Cordsets

9



S100FUSBRASS-NOR

Unibody Standard Swirl Brass No O-ring
Nozzles: 1 Inch Brass No O-ring Option

Price \$84.00

Available Options:

S100FUSBRASS-NOR.014, S100FUSBRASS-NOR.018
S100FUSBRASS-NOR.035



S100FUSBRASS-OR

S100F Unibody Wide Swirl
Brass with O-ring Nozzles

Price \$84.00

Available Options:

S100FUWSBRASS-OR.014, S100FUWSBRASS-OR.018
S100FUWSBRASS-OR.035



S100FUSSTEEL-NOR

Unibody Standard Swirl Brass No O-ring
Nozzles: 1 inch Brass No O-ring Option

Price \$84.00

Available Options:

S100FUSSTEEL-NOR.014, S100FUSSTEEL-NOR.018
S100FUSSTEEL-NOR.035



S100FUWSSTEEL-OR

S100F Unibody Wide Swirl
Steel with O-ring Nozzles

Price \$84.00

Available Options:

S100FUWSSTEEL-OR.014, S100FUWSSTEEL-OR.018
S100FUWSSTEEL-OR.035



S250012HSS-NOR

1 inch - 12 Hole Swirl Titanium Coated Brass No O-Ring Nozzles

Price \$96⁰⁰

Specify Size:

S250012HSS-NOR.012, S250012HSS-NOR.014
S250012HSS-NOR.016, S250012HSS-NOR.018
S250012HSS-NOR.020, S250012HSS-NOR.024
S250012HSS-NOR.035



S200012HS-OR

1 inch - 12 Hole Swirl Titanium Coated Steel No O-Ring Nozzles

Price \$144⁰⁰

Specify Size:

S200012HS.012, S200012HS.014, S200012HS.016
S200012HS.018, S200012HS.020, S200012HS.024
S200012HS.035



S250012HSW-NOR

2 inch - 12 Hole Wide Swirl Titanium Coated Steel No O-Ring Nozzles

Price \$144⁰⁰

Specify Size:

S250012HSW-NOR.012, S250012HSW-NOR.014
S250012HSW-NOR.016, S250012HSW-NOR.018
S250012HSW-NOR.020, S250012HSW-NOR.024
S250012HSW-NOR.035



S200012HSW-NOR

2 inch - 12 Hole Wide Swirl Titanium Coated Steel No O-Ring Nozzles

Price \$144⁰⁰

Specify Size:

S200012HSW.012, S200012HSW.014
S200012HSW.016, S200012HSW.018
S200012HSW.020, S200012HSW.024
S200012HSW.035

Custom Sizes Available - Call for Further Information



S100F Disc Wide Swirl Nozzle

G100F Disc
2 inch Swirl Brass Nozzle

Price \$72.00

Specify Size:

S100FDWBRASS.014, S100FDWBRASS.018
S100FDWBRASS.035



S100F Disc Swirl Brass Nozzle

S100F Disc
1 inch Swirl Brass Nozzle

Price \$72.00

Specify Size:

S100FDSBRASS.014, S100FDSBRASS.018
S100FDSBRASS.035



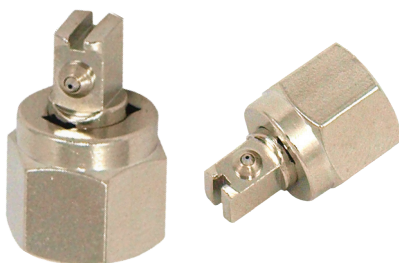
Inside View



S100FDISC NUT

Nut for Swirl Nozzle

Price \$3.60



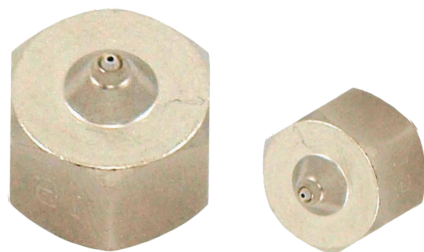
Right Angle (90 Degree) Nozzles

Item Number:
GN90.010 through GN90.040

Price \$19.⁰⁰

Available Options:

SIP Number	OEM Number	Nozzle Size
SNR90.010	320010, 1011010, 270842, 714847	0.010
SNR90.012	320012, 238739, 244518, 974XX003	0.012
SNR90.014	320014, 244519, 1011014, 974XX004	0.014
SNR90.016	320016, 1011016, 244520, 768XX755	0.016
SNR90.018	320018, 1011018, 974XX006	0.018
SNR90.020	320020, 1011020, 270853, 768XX756	0.020
SNR90.022	320022	0.022
SNR90.024	320024, 1011024, 974XX008	0.024
SNR90.028	320028, 1011028, 974XX009	0.028
SNR90.030	320030, 165782	0.030
SNR90.038	320038	0.038
SNR90.040	320040, 1011040, 974XX011	0.040



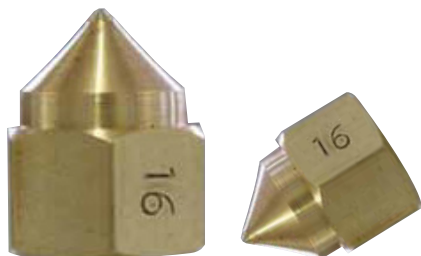
SNS Straight Angle Nozzles - Brass with Stainless Steel Insert

Item Number:
SNS.010 through SNS.040

Price \$15.00

Available Options:

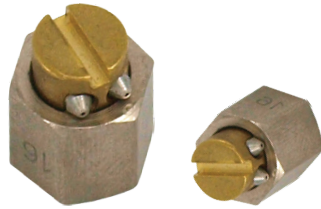
SIP Number	OEM Number	Nozzle Size
SNS.010	322010, 237210	0.010
SNS.012	322012, 237212	0.012
SNS.014	322014	0.014
SNS.016	322016, 237008	0.016
SNS.018	322018, 237018	0.018
SNS.020	322020, 237220, 971XX107	0.020
SNS.022	322022	0.022
SNS.024	322024, 237224, 971XX108	0.024
SNS.028	322028, 237228, 971XX109	0.028
SNS.030	322030, 237330, 971XX410	0.030
SNS.032	322032	0.032
SNS.040	322040, 971XX411	0.040



SNS Straight Angle Nozzles - Stainless Steel

Price \$20^{.00}

Available Options:		
SIP Number	OEM Number	Nozzle Size
SNS300.010	237002	0.010
SNS300.012	237003	0.012
SNS300.014	237005	0.014
SNS300.016	237008	0.016
SNS300.018	237018	0.018
SNS300.021	237027	0.021
SNS300.024	237040	0.024
SNS300.028	237060	0.028



**SNR90DUAL15:
15 Degree Nozzles**

Item Number: SNR90.DUAL15

Price \$43.⁰⁰



**SNR90DUAL30:
30 Degree Nozzles**

Item Number: SNR90.DUAL30

Price \$43.⁰⁰

Available Options: SNR90DUAL15 - 15 Degree Nozzles

SIP Number	OEM Number	Nozzle Size
SNR90DUAL15.012	320112, 1015812, 165776, 974XX203	0.012
SNR90DUAL15.014	320114, 1015814, 273384, 974XX204	0.014
SNR90DUAL15.016	320116, 1015816, 804047, 974XX205	0.016
SNR90DUAL15.018	320118, 1015818, 165777, 974XX206	0.018
SNR90DUAL15.020	320120, 1015820, 271938, 974XX207	0.020

Available Options: SNR90DUAL30 - 30 Degree Nozzles

SNR90DUAL30.012	320212, 1015912, 270698, 974XX403	0.012
SNR90DUAL30.014	320214, 1015914, 270699, 974XX404	0.014
SNR90DUAL30.016	320216, 1015916, 270700, 970XX405	0.016
SNR90DUAL30.018	320218, 1015918, 165780, 974XX406	0.018
SNR90DUAL130.020	320220, 1015920, 709786, 974XX407	0.020



SQC45 Filter

45 Degree Filters

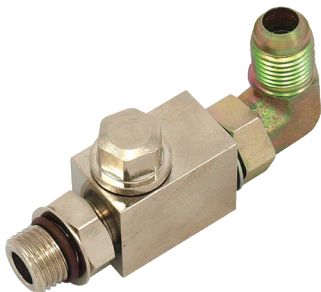
Price \$52.00

Available Options:

SQC45-F50 (50 MESH) - OEM#: 1007233, 105312, 769XX660, KQCF455

SQC45-F100 (100 MESH) - OEM#: 1007234, 105302, 769XX659

SQC45-F200 (200 MESH)



SQC90 Filter

90 Degree Filters

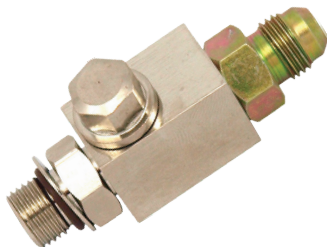
Price \$52.00

Available Options:

SQC90-F50 (50 MESH) - OEM#: 1007230, 769XX656, KQCF905

SQC90-F100 (100 MESH) - OEM#: 1007231, 105303, 769XX655

SQC90-F200 (200 MESH) - OEM#: 1007232, 769XX654, KQCF902



SQC-ST Filter

Straight Filters

Price \$52.00

Available Options:

SQCST-F50 (50 MESH) - OEM#: 1007033, 105311, 769XX657

SQCST-F100 (100 MESH) - OEM#: 1007034, 105301, 769XX662, KQCF001

SQCST-F200 (200 MESH) - OEM#: 1007035, 769XX661



50, 100, 200 Mesh

Filter Mesh Size: 50-Mesh, 100-Mesh, 200-Mesh

Price \$12.00

Please Note:

50 MESH = 50 WIRES PER INCH

100 MESH = 100 WIRES PER INCH

200 MESH = 200 WIRES PER INCH



SIN45-Inline Filter

45 Degree Filters

Price \$45⁰⁰

Specify Sizes:

SIN45-F50 (50 MESH) - OEM#: 274989

SIN45-F100 (100 MESH) - OEM#: 274990

SIN45-F200 (200 MESH) - OEM#: 274991



SIN90-Inline Filter

45 Degree Filters

Price \$45⁰⁰

Specify Sizes:

SIN90-F50 (50 MESH) - OEM#: 274287

SIN90-F100 (100 MESH) - OEM#: 274288

SIN90-F200 (200 MESH) - OEM#: 274289



SINST-Inline Filter

Straight Inline Filters

Price \$45⁰⁰

Specify Sizes:

SINST-F50 (50 MESH) - OEM#: 274290

SINST-F100 (100 MESH) - OEM#: 274291

SINST-F200 (200 MESH) - OEM#: 274292



Inline Filter Replacement

Price \$6⁰⁰

Specify Sizes:

SF50 (50 MESH) - OEM#: 271598

SF100 (100 MESH) - OEM#: 271599

SF200 (200 MESH) - OEM#: 271600

Please Note:

50 MESH = 50 WIRES PER INCH

100 MESH = 100 WIRES PER INCH

200 MESH = 200 WIRES PER INCH



Back View

SIP0226 Tank Filter

Triple Mesh Tank Filter
Nordson® PRO BLUE Compatible

Price \$59.00

OEM#: 1021919, 1028305



S500 High Flex Hoses

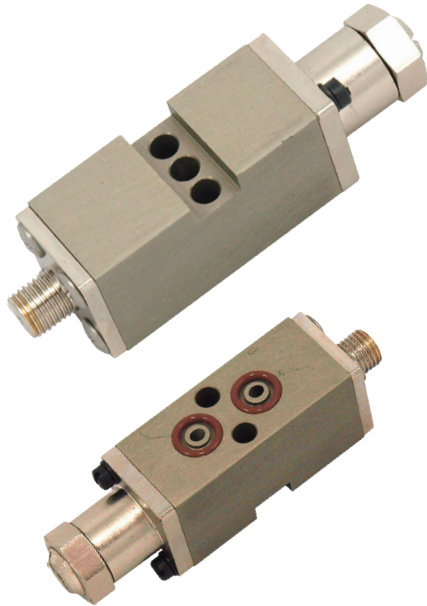
S500-2 (2 ft)	Price \$200^{.00}
S500-4 (4 ft)	Price \$253^{.00}
OEM#: 274791, 100120, 981XX03, 100120	
S500-6 (6 ft)	Price \$286^{.00}
OEM#: 2743792, 100121, 50184, 981XX005	
S500-8 (8 ft)	Price \$350^{.00}
OEM#: 274793, 051989, 981XX006	
S500-10 (10 ft)	Price \$412^{.00}
OEM#: 274794, 100123	
S500-12 (12 ft)	Price \$465^{.00}
OEM#: 274795, 100124	
S500-16 (16 ft)	Price \$585^{.00}
OEM#: 274796, 100125, X100303	
S500-20 (20 ft)	Price \$685^{.00}
S500-24 (24 ft)	Price \$784^{.00}
OEM#: 2743792, 100121, 50184, 981XX005	

S500 Wash Down Hoses

S500-02WD (2 ft)	Price \$270^{.00}
S500-04WD (4 ft)	Price \$300^{.00}
OEM#: 276740, 104142, 780XX017	
S500-06WD (6 ft)	Price \$365^{.00}
OEM#: 276741, 104413, 780XX018	
S500-08WD (8 ft)	Price \$430^{.00}
OEM#: 276742, 104144, 780XX019	
S500-10WD (10 ft)	Price \$505^{.00}
OEM#: 276743, 104145, 780XX020	
S500-16WD (16 ft)	Price \$695^{.00}
OEM#: 276744, 780XX021	

AD-31 Hand Gun Hoses

S800-08 (8 ft)	Price \$608^{.00}
S800-10 (10 ft)	Price \$749^{.00}
S800-12 (12 ft)	Price \$858^{.00}
S800-16 (16 ft)	Price \$1,045^{.00}
S800-20 (20 ft)	Price \$1,295^{.00}
S800-24 (24 ft)	Price \$1,552^{.00}

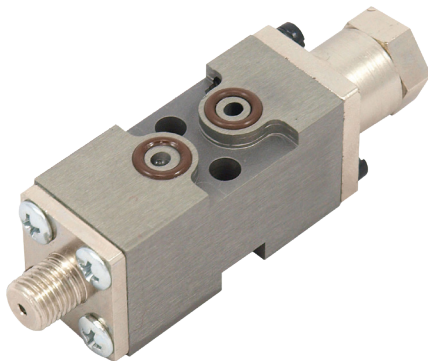


Back View

S100 Module

Price \$99.⁰⁰

OEM: 272282, 276119, 326583, 766XX149



S100 Module

S100 Module with Butterfly Cut.

Price \$119.⁰⁰



Back View

S100S - SLOT Module

S100S - SLOT Module
(Call for nozzle sizes)

Price \$264^{.00}

OEM#: 1021919, 1028305



S10 Module

S10 (H20 Series)

Price \$210^{.00}



Back View

S100ZA Module

S100ZA with adjuster

Price \$360.00

S100ZA Hot-Melt Module
with the following Nozzles:

S100ZA.008, S100ZA.010,
S100ZA.012 (N#276516), S100ZA.014,
S100ZA.016 (N#276517), S100ZA.018,
S100ZA.020 (N#276520), S100ZA.024,
S100ZA.035, S100ZA.040,
S100ZA.050, S100ZA.060.



S100Z-NA Module

S100Z-NA without adjuster.

Price \$300.00

S100Z-NA Hot-Melt Module
with the following Nozzles:

S100Z-NA.008, S100Z-NA.010,
S100Z-NA.012 (N#276516), S100Z-NA.014,
S100Z-NA.016 (N#276517), S100Z-NA.018,
S100Z-NA.020 (N#276520), S100Z-NA.024,
S100Z-NA.035, S100Z-NA.040,
S100Z-NA.050, S100Z-NA.060.



S100Z-A Adjuster

Fine adjuster only

Price \$84.00

S100ZA Hot-Melt Module
with the following Nozzles:



S100F Module

N#144906-861108 / H200CF

Price \$298.00



S100F-PAD Module

Nordson® H200-PAD Compatible

Price \$298.00



S300 Mini Module

S300.MINI, Hot-Melt Module

Price \$216.00

With the following nozzle size options:

- S300.MINI.012, S300.MINI.014
- S300.MINI.016, S300.MINI.018
- S300.MINI.020, S300.MINI.024
- S300.MINI.035

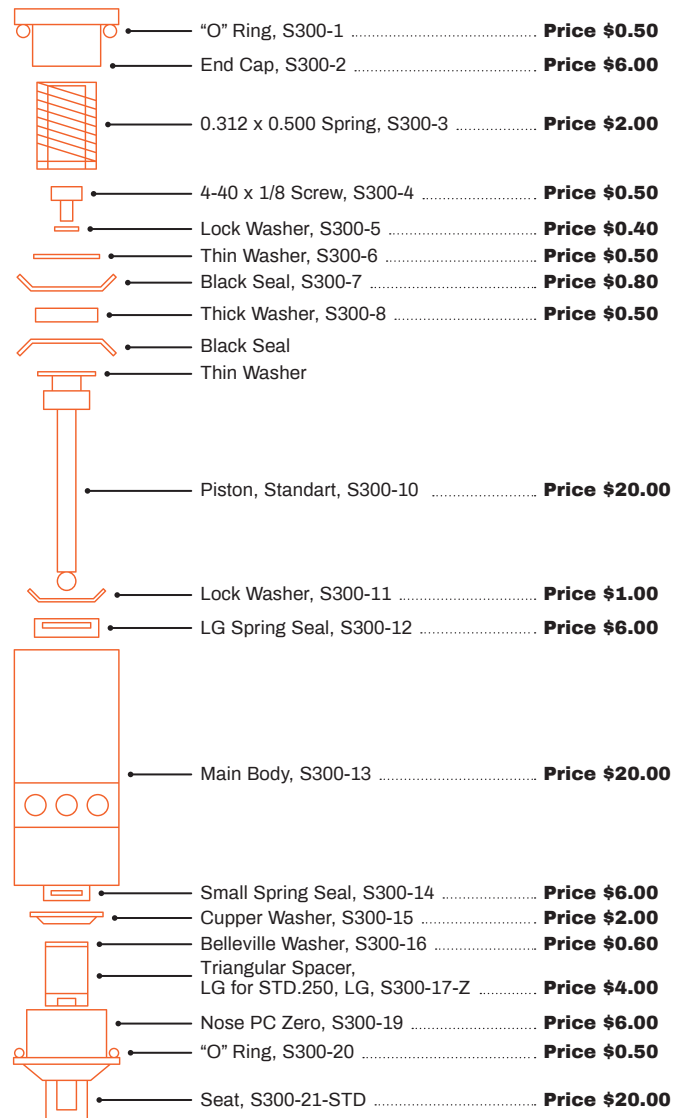
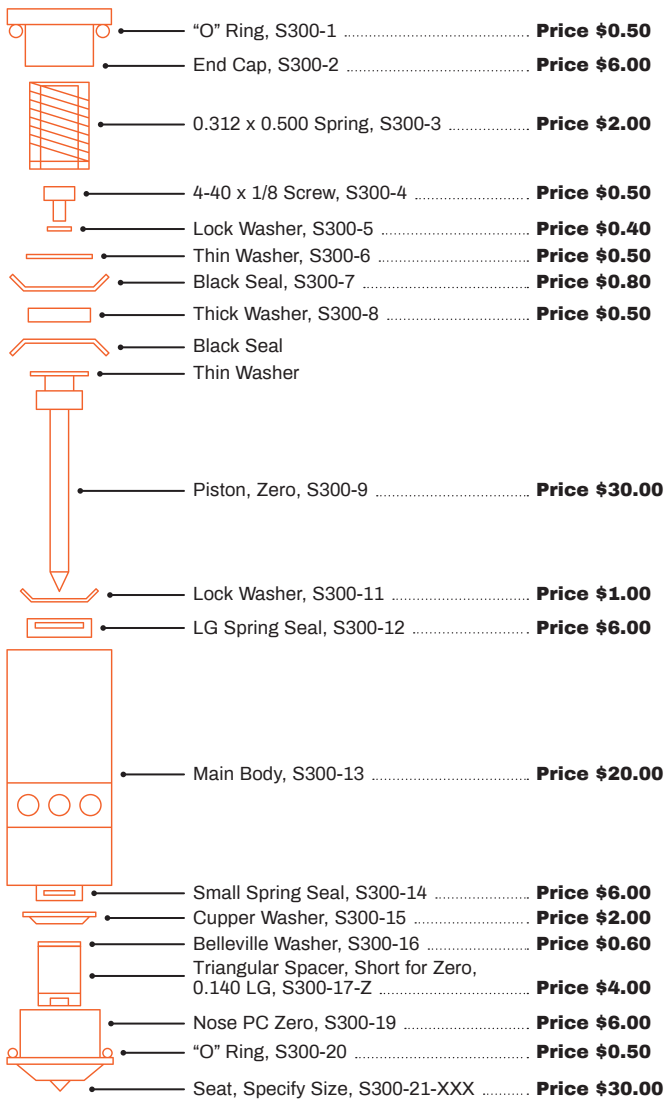


S300.MINISTD Module

S300.MINISTD,
Hot-Melt Module
Air-Open / Air-Closed

Price \$168.00

Takes SNS Nozzles





S100AA Modules

Air Open / Air Closed
Compatible with Nordson®
400 Series Modules.

Price \$166⁰⁰



S100FAA Modules

Air Open / Air Closed
Compatible with Nordson®
400 Series Modules.

Price \$325⁰⁰



S100ZAA Modules

Air Open / Air Closed
Compatible with Nordson®
400 Series Modules.

Price \$360⁰⁰

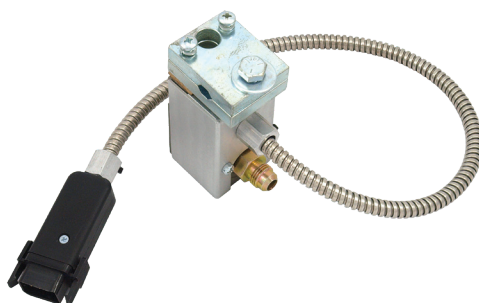
Helicoils in all guns



S10GUN

S10 (H20 Series Gun)
Modules not included

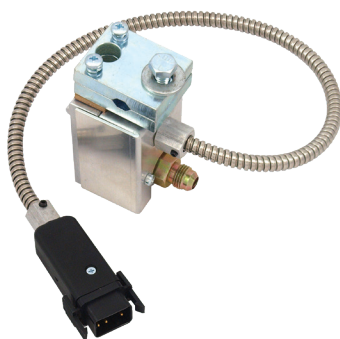
Price \$487.⁰⁰



S100GUNMOD1

Single (1) Module Gun
Nordson® # H201 Std Gun
Modules not included

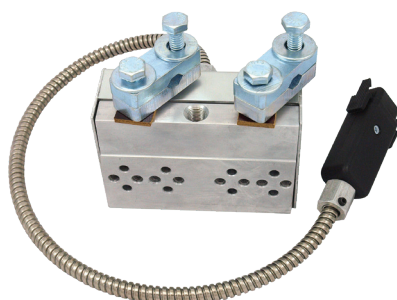
Price \$505.⁰⁰



S10GUN

Double (2) Module Gun
Nordson® # H202 Std Gun
Modules not included

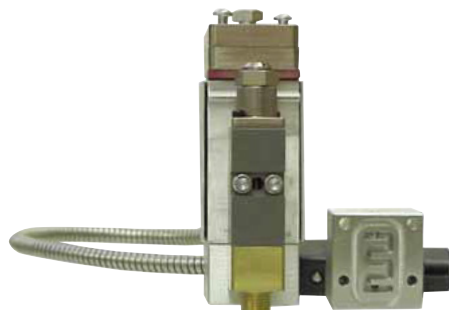
Price \$589.⁰⁰



S10GUN

Four (4) Module Gun
Nordson® Compatible
H204 Std Gun
Modules not included

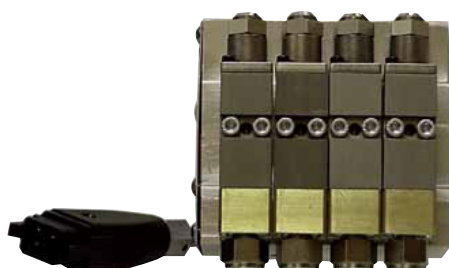
Price \$850.⁰⁰



S100FGUNMOD1 FIBERIZATION

Single (1) Module Gun
Modules not included

Price \$820⁰⁰



S100FGUNMOD4 FIBERIZATION

Four (4) Module Gun
Modules not included

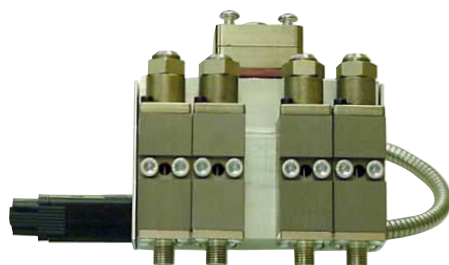
Price \$1,060⁰⁰



S100FGUNMOD1 FIBERIZATION 2 CORDSET Glue Gun

Separate cordset for control
of temperature of air and glue
Modules not included

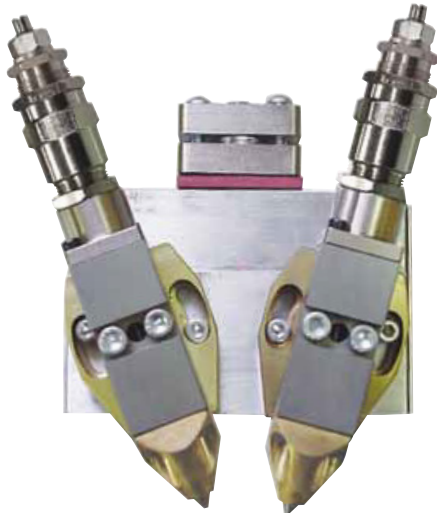
Price \$1,400⁰⁰



S100AAGUNMOD4

Four (4) Module Gun
Modules not included

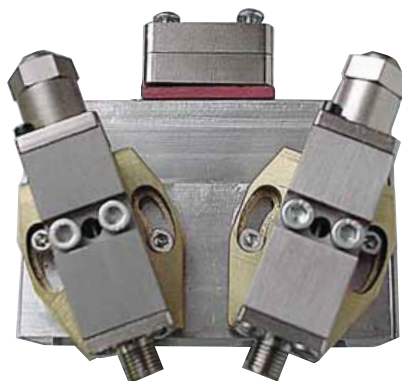
Price \$940⁰⁰



S100ZGUNMOD2 SWIVEL

Angle Position of
the swivelgun is flexible.
Two (2) Module Gun
Modules not included

Price \$820⁰⁰



S100GUNMOD2 SWIVEL

Angle Position of
the swivelgun is flexible.
Two (2) Module Gun
Modules not included

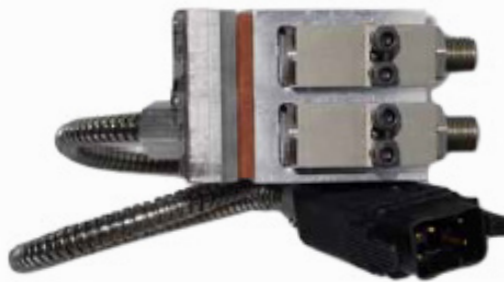
Price \$820⁰⁰



S300MINIGUN

With Filter
Modules not included

Price \$695⁰⁰



S300MINIGUNMOD2

ITW-Style with Filter
Two (2) Module Gun
Modules not included

Price \$820⁰⁰



Filters

See page 27 for filter
mesh sizes.



S100LPMOD2

Low Profile Glue Guns
Two (2) Module Gun
Modules not included

Price \$665⁰⁰



S100LPMOD4

Low Profile Glue Guns
Four (4) Module Gun
Modules not included

Price \$780⁰⁰



S8000-STD

Standard Hand-Held Gun
(AD-31 Compatible)
Packaging Applications

Price \$695.00

SSTD Nozzle

(Not included)
Sizes available:
0.041, 0.061, 0.091

Price \$24.00



S12000-SWIRL

Swirl Hand-Held Gun
(AD-31 Compatible)
Nozzle not included in price

Price \$1,395.00



Swirl Nozzles

(Not included)
See page 03 for nozzle section



S1500 Versashot

Versashot Hand-Held Gun

Price \$695.00



Equipment Repair and Refurbished Melter Sales

Restoration of old equipment will save you money. Do not buy new – renew your old equipment.

Stop replacing one part at a time. We can refurbish your equipment and have it back in like new condition for half the price of a new unit.

We repair and refurbish hot melt equipment including Nordson®, ITW Dynatech®, ValcoMelton®, and Slautterback®.

We sell refurbished Nordson® melters and pumps. Some melters and pumps require an exchange to be replaced with a refurbished unit. Contact us to discuss the possibilities.

Call or Email for Pricing



Hot Melt

Stehle Industrial Products offers a wide variety of high-performance hot melt adhesives for various industrial applications; Case and Carton sealing plus Tray Forming and many more. Our Metallocene, EVA and Cool Technology adhesives provide strong bonds, clean machining, and increased mileage.

Trust SIP for high quality, fast delivery, and to customize a cost-saving solution to fit your hot melt needs.



Pressure Sensitive Hot Melt

Stehle Industrial PSA Labeling Adhesives are formulated for pick up and lap bonds from roll or magazine feed labelers. Our clean machining, clear products provide a cost-effective result to your labeling operation.

Save on stretch wrap cost by using SIP Pressure Sensitive Palletizing Adhesives. Secure your pallets using PSA adhesive and less stretch film.



Try our easy release, non-staining Fugitive Hot Melt for credit card, sample packs, and marketing applications.

Contact us for answers to all your hot melt adhesive questions.



GG1100

120 Volt 100 Watt Industrial Hot Melt Glue Gun.
Requires 1/2" stick size. Delivers up to 2 lbs. per hour.

Price \$48.00



GG300

120 Volt 300 Watt Industrial Hot Melt Glue Gun.
Requires 1/2" stick size. Delivers up to 3.75 lbs. per hour.

Price \$142.00



GG5800

120 Volt 400 Watt Industrial Hot Melt Glue Gun.
Requires 5/8" stick size. Adjustable temperature control: 248°- 428°. Delivers up to 3.75 lbs. per hour.

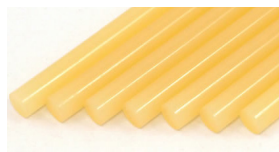
Price \$195.00



Quick Stick Metalocene

Premium hot melt stick. This is a very heat stable product with good high and low temperature bond performance.

1/2"-12" 25 lb. Box **Price \$197.00**

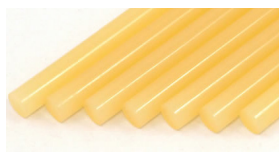


SIP 25

Quick Stick-Designed for corrugated boxes.
Dries quickly for high-speed hand gluing operations.

1/2"-12" 25 lb. Box **Price \$112.00**

5/8"-10" 25 lb. Box **Price \$112.00**



SIP 30

Quick Stick for Freezer Applications. Use in applications where product needs freezer resistance.

1/2"-12" 25 lb. Box **Price \$145.00**

5/8"-10" 25 lb. Box **Price \$145.00**



RTD
Compatible
Price \$29.00



Heaters
Please provide the following information when ordering heaters:
Diameter, Wattage, Voltage, Lead Length
(For Example: 3/8 Diameter, 150 Watts, 240 Volts, 26 inch Black Teflon Lead)



Cordset
Compatible
Price \$144.00

About Us

Stehle Industrial Products provides replacement hot melt parts and adhesives to the packaging industry. We specialize in supplying industrial products to ensure our client's packaging operations run efficiently. With over 30 years' experience SIP understands the packaging industry and your needs. Our economical replacement parts and adhesives will reduce your packaging costs. Our emphasis is always customer first with fast delivery. Choose Stehle Industrial Products to be your most trusted supplier to customize a cost-saving solution to fit your hot melt parts and adhesive needs.

Buy your parts and adhesives from Stehle Industrial Products and take advantage of guaranteed savings.

High Quality, Low Price, Fast Delivery.



STEHLE
INDUSTRIAL PRODUCTS

Telephone: 704-439-7491
Email: Sales@StehleIndustrial.com
Website: StehleIndustrial.com
Address: 19701 Bethel Church Rd
Ste 103-165
Cornelius, NC 28031

Hot-Line: 855-933-4596